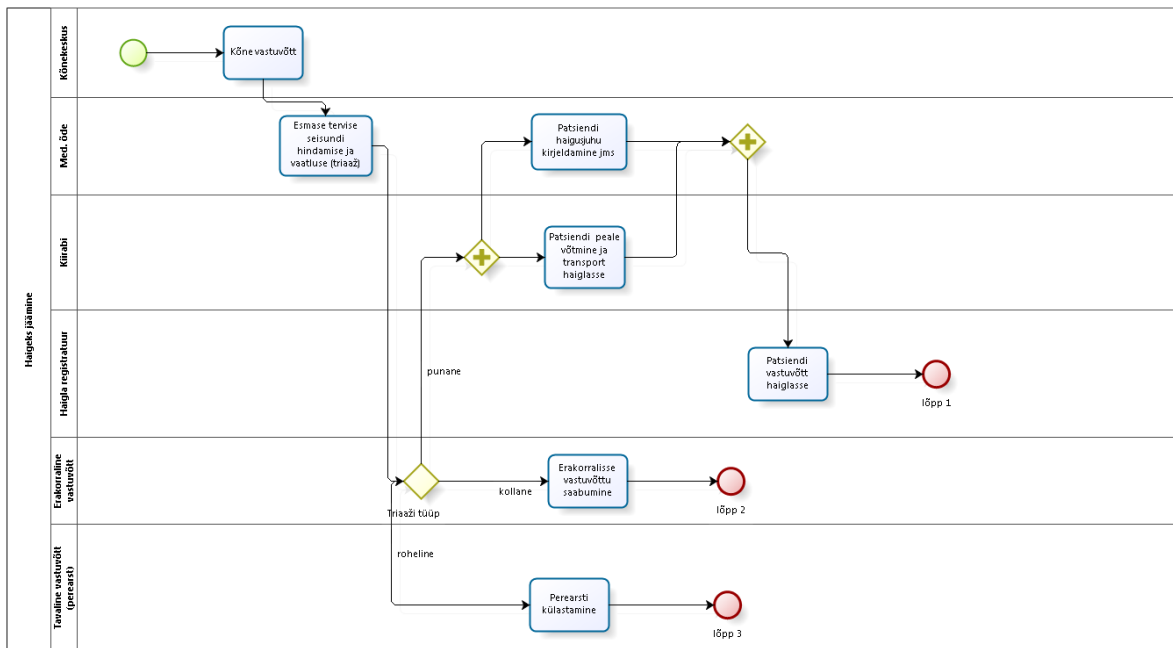
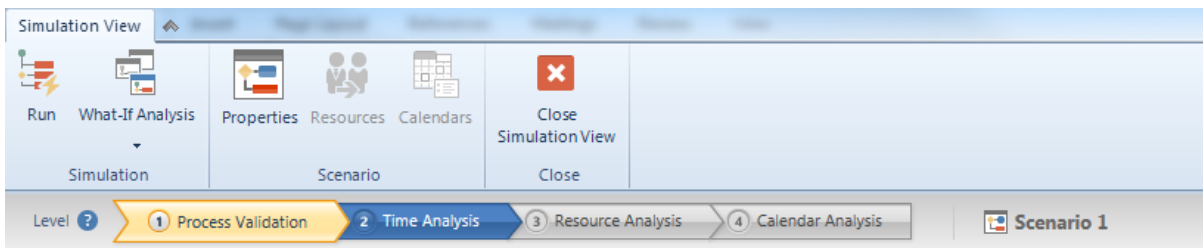


# Äriprotsessi simulatsioon.

## 1. Äriprotsessi kirjeldus



## 2. Protsessi valideerimine:



- Simulation view -> Process Validation -> Run -> Start

Process Simulation

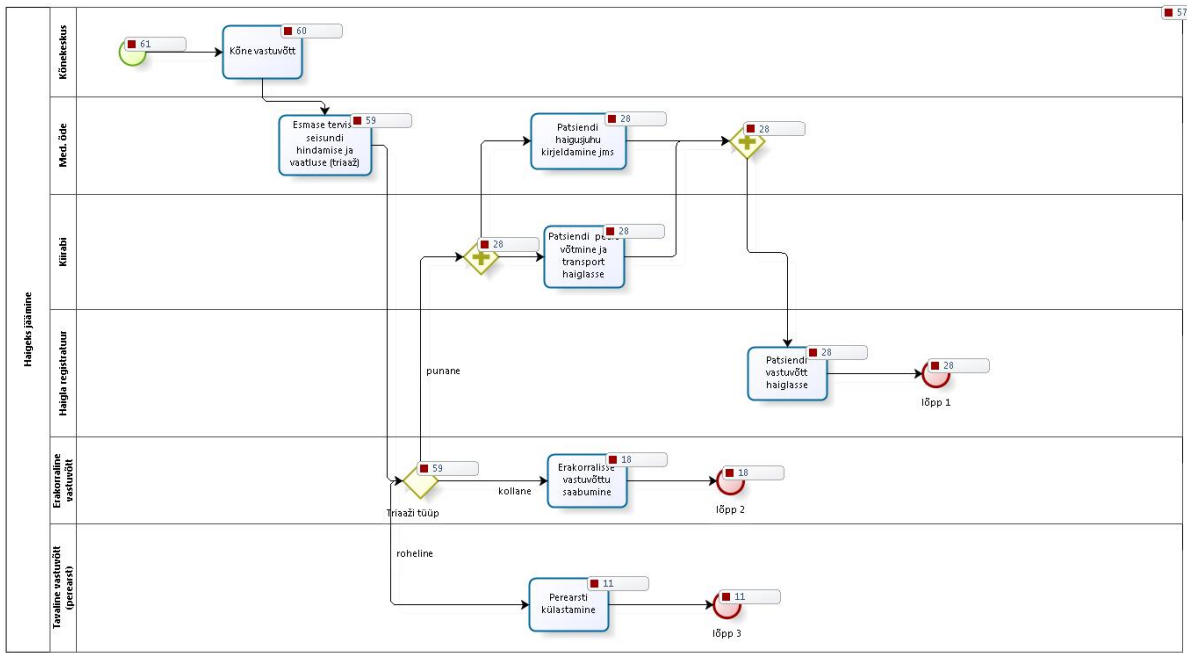
Start Stop Results Simulation

Scenari Display Normal Completed

Position Analysis

Real Time Display

Close window Close



- Tulemus:

Simulation Results

Haigeks jäämine

Scenario information

Name Scenario 1

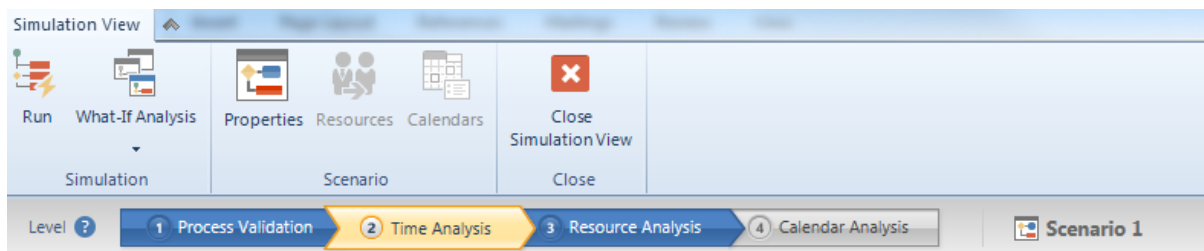
Time unit Minutes

Duration 030,00:00:00

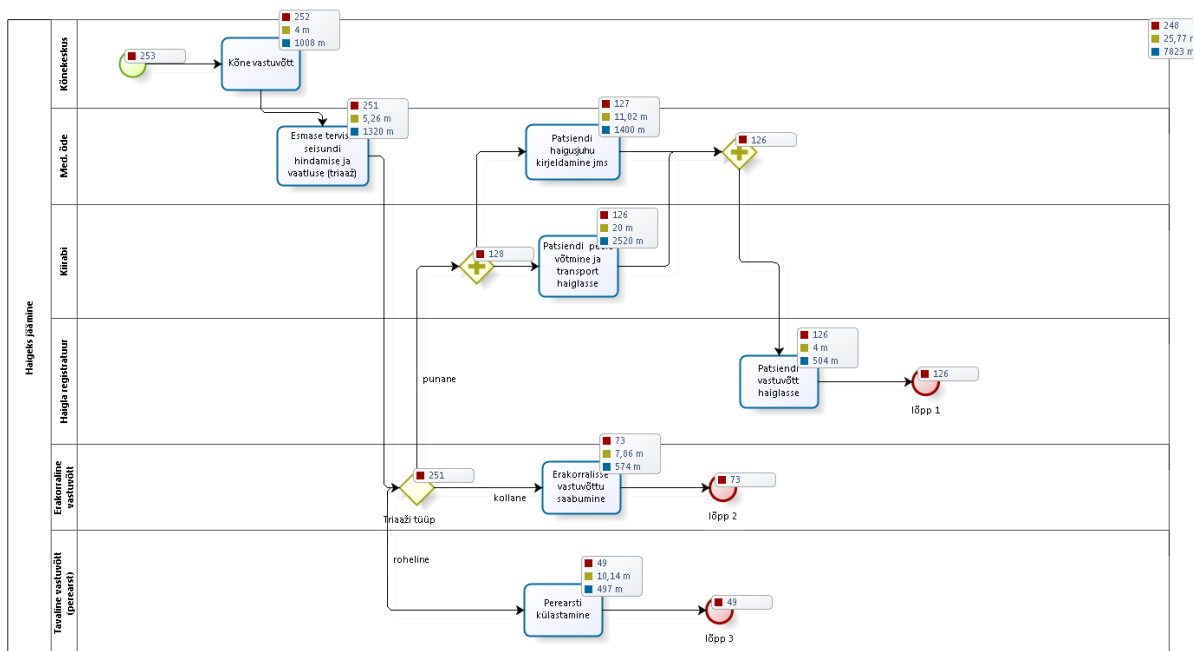
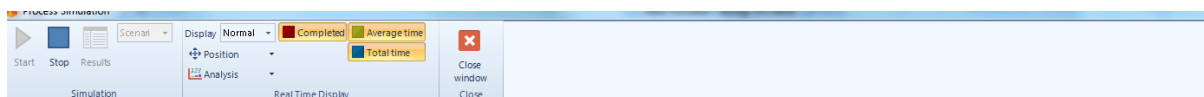
Name	Type	Instances completed
Haigeks jäämine	Process	1 000
NoneStart	Start event	1 000
Kõne vastuvõtt	Task	1 000
Esmase tervise seisundi hindamise ja vaatluse (triaaž)	Task	1 000
Triaaži tüüp	Gateway	1 000
Erakorralise vastuvõttu saabumine	Task	299
lõpp 2	End event	299
Perearsti külastamine	Task	200
lõpp 3	End event	200
ParallelGateway	Gateway	501
Patsiendi haigusjuhu kirjeldamine Jms	Task	501
Patsiendi peale võtmine ja transport haiglasse	Task	501
Patsiendi vastuvõtt haiglasse	Task	501
lõpp 1	End event	501
ParallelGateway	Gateway	501

Export to Excel Print

### 3. Ajaline analüüs:



- Simulation view -> Time Analysis -> Run -> Start



- Tulemus:

Scenario information	
Name	Scenario 1
Time unit	Minutes
Duration	030,00:00:00

Name	Type	Instances completed	Instances started	Min. time	Max. time	Avg. time	Total time
Haigeks jäämine	Process	1 000	1 000	16m	35m	25m 45s	21d 17h 39m
NoneStart	Start event	1 000					
Kõne vastuvõtt	Task	1 000	1 000	4m	4m	4m	2d 18h 40m
Esmase tervise seisundi hindamise ja vaatluse (triaaži)	Task	1 000	1 000	5m	7m	5m 13s	3d 15h 3m
Triaaži tüüp	Gateway	1 000	1 000				
Erakorralisse vastuvõttu saabumine	Task	299	299	7m	16m	7m 54s	1d 15h 26m
lõpp 2	End event	299					
Perearsti külastamine	Task	200	200	10m	21m	10m 45s	1d 11h 52m
lõpp 3	End event	200					
ParallelGateway	Gateway	501	501				
Patsiendi haigusjuhu kirjeldamine jms	Task	501	501	11m	15m	11m 3s	3d 20h 14m
Patsiendi peale võtmine ja transport haiglasse	Task	501	501	20m	20m	20m	6d 23h
Patsiendi vastuvõtt haiglasse	Task	501	501	4m	4m	4m	1d 9h 24m

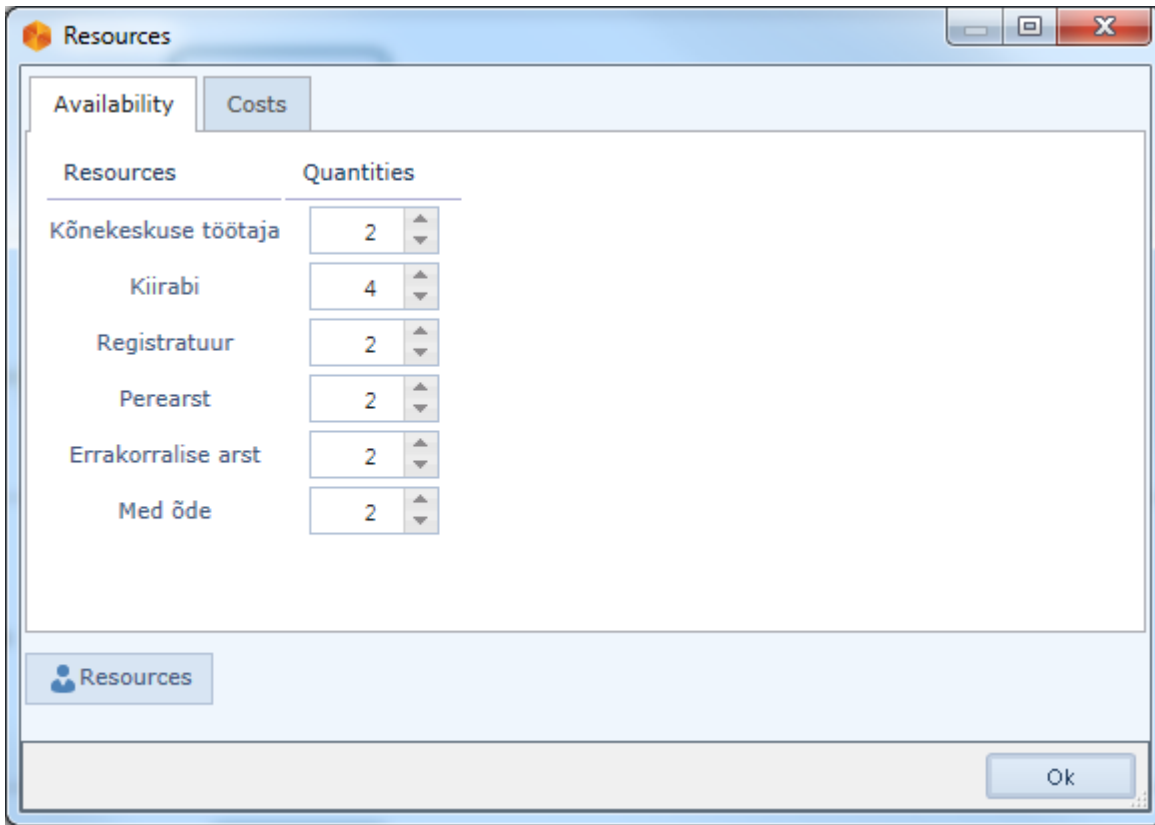
#### 4. Ressursi analüüs:

Simulation View

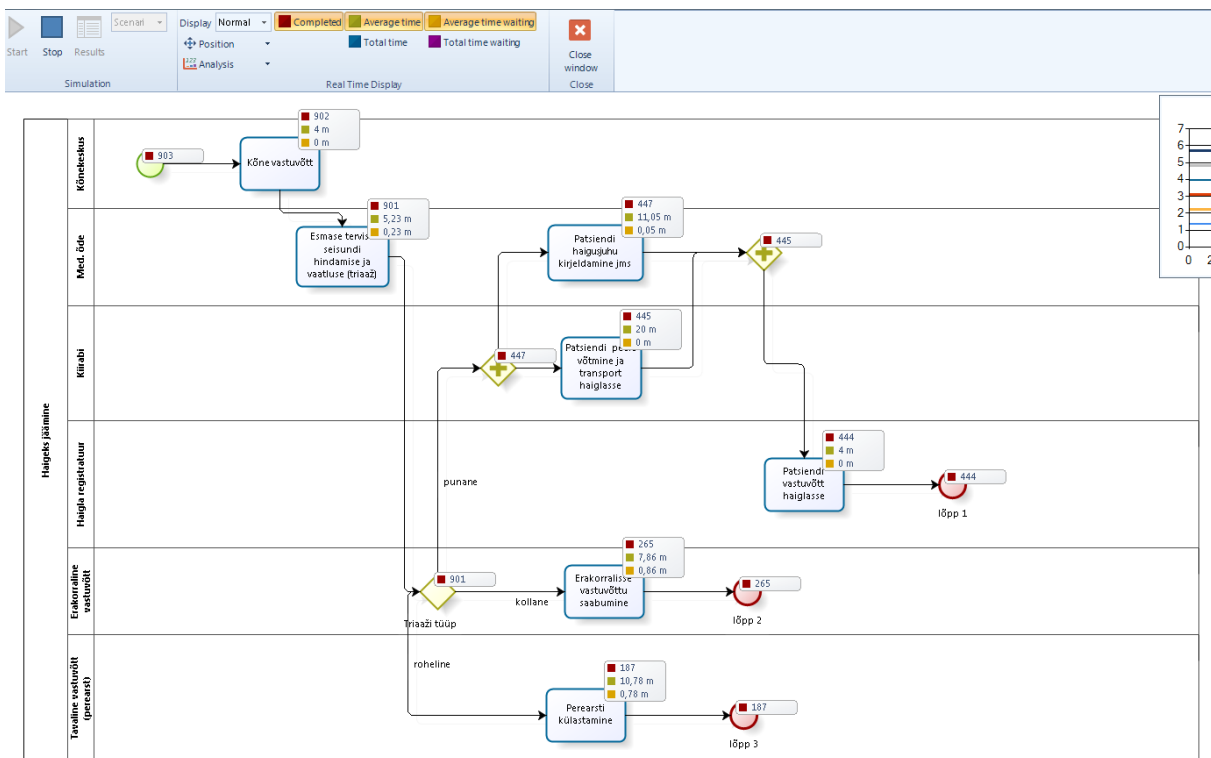
Run
 What-If Analysis
 Properties
 Resources
 Calendars
 Close Simulation View

Simulation
 Scenario
 Close

Level ?
 1 Process Validation
 2 Time Analysis
 3 Resource Analysis
 4 Calendar Analysis



- Simulation view -> Resource Analysis -> Run -> Start



- Tulemused:

Simulation Results

Resources

Haigeks jäämine

Scenario information

Name Scenario 1

Time unit Minutes

Duration 030,00:00:00

Name	Type	Instances completed	Instances started	Min. time	Max. time	Avg. time	Total time	Min. time waiting res
Haigeks jäämine	Process	1 000	1 000	16m	35m	25m 46s	21d 17h 40m	
NoneStart	Start event	1 000						
Kõne vastuvõtt	Task	1 000	1 000	4m	4m	4m	2d 18h 40m	0
Esmase tervise seisundi hindamise ja vaatluse (triaaz)	Task	1 000	1 000	5m	7m	5m 13s	3d 15h 3m	0
Triaaži tüüp	Gateway	1 000	1 000					
Erakorralise vastuvõttu saabumine	Task	299	299	7m	16m	7m 55s	1d 15h 28m	0
lõpp 2	End event	299						
Perearsti külastamine	Task	200	200	10m	21m	10m 45s	1d 11h 51m	0
lõpp 3	End event	200						
ParallelGateway	Gateway	501	501					
Patsiendi haigusjuhu kirjeldamine jms	Task	501	501	11m	15m	11m 3s	3d 20h 14m	0

Export to Excel Print

## 5. Kalendri analüüs:

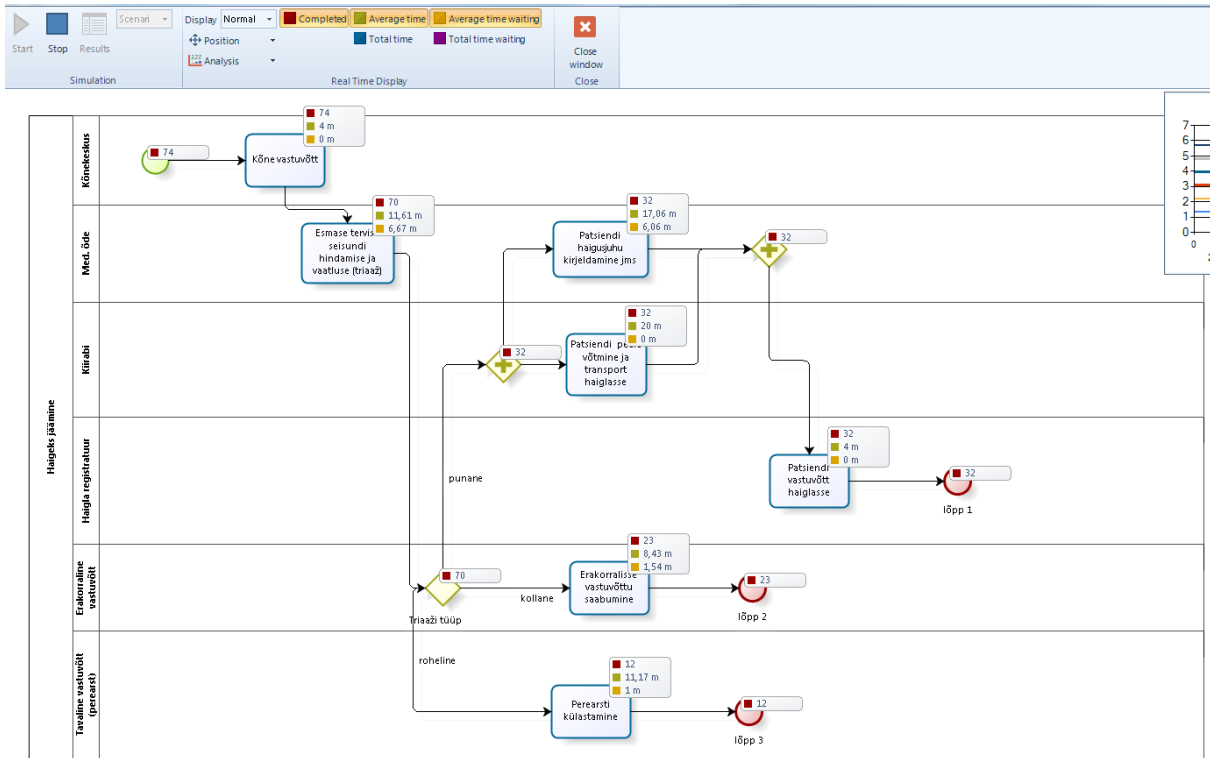
Simulation View

Run What-If Analysis Properties Resources Calendars Close Simulation View

Simulation Scenario Close

Level ? 1 Process Validation 2 Time Analysis 3 Resource Analysis 4 Calendar Analysis

- Simulation view -> Calendar Analysis -> Run -> Start



- Tulemus:

Scenario information		Name		Time unit		Duration		
Name		Scenario 1		Minutes		030,00:00:00		
Name	Type	Instances completed	Instances started	Min. time	Max. time	Avg. time	Total time	Min. time waiting resource
Haigeks jäämine	Process	1 000	1 000	16m	6h 9m	2h 19m 25s	103d 18h 14m 51s	
NoneStart	Start event	1 000						
Kõne vastuvõtt	Task	1 000	1 000	4m	4m	4m	2d 18h 40m	0
Esmase tervise seisundi hindamise ja vaatluse (triaaž)	Task	1 000	1 000	5m	3h 15m	1h 23m 14s	57d 19h 17m	0
Triaaži tüüp	Gateway	1 000	1 000					
Erakorralisse vastuvõttu saabumine	Task	299	299	7m	21m	8m 28s	1d 18h 12m 42s	0
Iõpp 2	End event	299						

- Muutke õdede arv 2 -> 3 peale ja analüüsige uuesti:

Scenario information

Name Scenario 1  
 Time unit Minutes  
 Duration 030,00:00:00

Name	Type	Instances completed	Instances started	Min. time	Max. time	Avg. time	Total time	wa
Haigeks jäämine	Process	1 000	1 000	16m	35m	25m 46s	21d 17h 48m	
NoneStart	Start event	1 000						
Kõne vastuvõtt	Task	1 000	1 000	4m	4m	4m	2d 18h 40m	0
Esmase tervise seisundi hindamise ja vaatluse (triaaž)	Task	1 000	1 000	5m	7m	5m 13s	3d 15h 3m	0
Triaaži tüüp	Gateway	1 000	1 000					
Erakorralisse vastuvõttu saabumine	Task	299	299	7m	16m	7m 57s	1d 15h 36m	0
lõpp 2	End event	299						
Perearsti külastamine	Task	200	200	10m	21m	10m 45s	1d 11h 51m	0
lõpp 3	End event	200						
ParallelGateway	Gateway	501	501					